

# RUBY RIBBON

A photograph of two women standing in a garden. The woman on the left has dark hair and is wearing a light blue tank top and black leggings. The woman on the right has blonde hair and is wearing a colorful floral tank top and black leggings. They are both smiling and looking towards the camera. The background features a green hedge, a lawn with round bushes, and mountains under a clear blue sky. The text 'Spring' is written in a large, white, cursive font, with 'Embrace' and 'your curves' in a smaller, white, sans-serif font below it.

*Spring*  
Embrace  
your curves

Here's to a fresh season, new opportunities and the first look at our award-winning, curve-enhancing pieces that will shape and support you. You'll  
**FEEL AS GOOD AS YOU LOOK.**



**St Tropez Bikini Top (L)**

1923 6-16 \$69

Aquamarine  
(avail January)

**La Jolla Bikini Bottom**

1924 S-3XL \$59

Aquamarine, Seagrass  
(avail January)

*Bella is a 36C and 44" hip.  
She's wearing a size 8 bikini  
top and size L bikini bottom.*

**St Tropez Tankini (R)**

1910 6-22 \$79

Black, Zebra  
(avail January)

**St Tropez Swim Brief**

1931 S-3XL \$59

Black (avail January)

*McCallah is a 34DD and 44"  
hip. She's wearing a size 8  
tankini and size L swim brief.*

# escape

RIVIERA WAS VOTED THE MOST FLATTERING SWIM DESIGN BY InStyle

# TO THE RIVIERA

Dive into fun prints and curve-enhancing fits with these convertible swimsuits.



**Riviera Tankini (L)**

1743 6-22 \$79

Pacific Dot

(avail January)

**Riviera Swim Brief**

1908 S-3XL \$69

Pacific Dot, Coral

(avail January)

*Livvy is a 38C and 45" hip. She's wearing a size 10 one-piece.*

**Riviera One-Piece (C)**

1901 6-22 \$139

Pacific Dot

(avail January)

*McCallah is a 34DD and 44" hip. She's wearing a size 8 tankini and size L swim brief.*

**Riviera One-Piece (R)**

1901 6-22 \$139

Coral, Pacific Dot

(avail January)

*Jamie is a 38C and 47" hip. She's wearing a size 10 one-piece.*

THREE in ONE straps



RUBYRIBBON.COM @rubyribbonhq



**Riviera Bikini Top**

1907 6-16 \$69

Coral (avail January)

**Riviera Swim Brief**

1908 S-3XL \$69

Coral (avail January)

*Bella is a 36C and 44" hip. She's wearing a size 8 bikini top and size L bikini bottoms.*

FOUR in ONE straps



# animalMAGIC

Made with Invisishape™ for the ultimate in smoothing, shape and support. These suits will flatter your curves like nothing you've ever experienced.

**Palm Beach Tankini (L)**  
1903 6-22 \$79  
Leopard (avail January)  
**Palm Beach Swim Brief**  
1912 S-3XL \$69  
Black (avail January)

*Bella is a 36C and 44" hip.  
She's wearing a size 8  
tankini and size L swim brief.*

**Palm Beach One-Piece (R)**  
1902 6-22 \$139  
Leopard (avail January)

*Livvy is a 38C and 45" hip.  
She's wearing a size 10  
one-piece.*



Sleek, see-through panels

Criss-cross for slimming effect

Sleek, see-through panels



# sunny in ST TROPEZ

Smooth & sculpt with eye-catching detail, bold prints and plunging necklines.

**THIS PAGE**  
**St. Tropez One-Piece**  
1913 6-22 \$139  
Black, Zebra  
(avail January)

*Jamie is a 38C and 47" hip. She's wearing a size 10 one-piece.*

**OPPOSITE PAGE**  
**Swim Cover-Up (L)**  
1937, one-size, \$89  
Black (avail January)

*McCallah is a 34DD and 44" hip. She's wearing a one-size swim cover-up.*

**St. Tropez Tankini (C)**  
1910 6-22 \$79  
Zebra, Black  
(avail January)

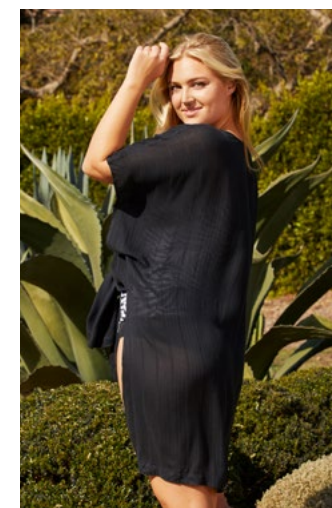
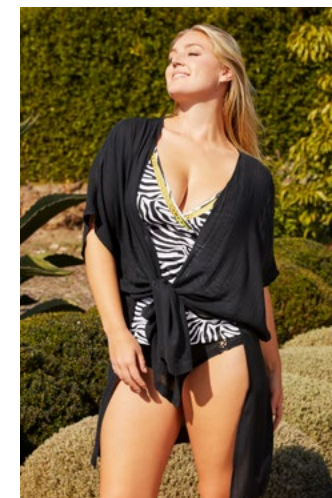
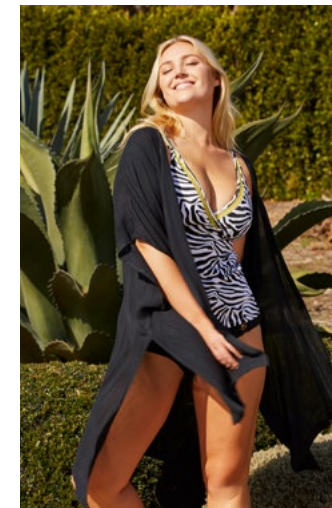
**St. Tropez Swim Brief**  
1931 S-3XL \$59  
Black (avail January)

*McCallah is a 34DD and 44" hip. She's wearing a size 8 tankini and size L swim brief.*

**St. Tropez One-Piece (R)**  
1913 6-22 \$139  
Zebra (avail January)

*Jamie is a 38C and 47" hip. She's wearing a size 10 one-piece.*

RUBYRIBBON.COM  
@rubyribbonhq



# CURVES AHEAD

Sensational support & control that feels as good as it looks.

## La Jolla Bikini Top

1922 6-16 \$69

Seagrass

(avail January)

## La Jolla Bikini Bottom

1924 S-3XL \$59

Seagrass, Aquamarine

(avail January)

*McCallah is a 34DD and 44" hip. She's wearing a size 8 bikini top and size L bikini bottom.*

## Second Skin V-Neck Cami (L)

1808 32-44 \$69

Festive Fuchsia

(avail February)

## Second Skin Brief

1788 S-3XL \$24

Festive Fuchsia

(avail February)

*Bella is a 36C and 44" hip. She's wearing a size 36 cami and size L brief.*

## Heritage Cami (R)

1867 34-46 \$83

Vanilla Cake

(avail March)

## Second Skin Brief

1788 S-3XL \$24

Fawn (avail now)

*McCallah is a 34DD and 44" hip. She's wearing a size 36 cami and size L brief.*

LEVEL  
2  
Smoothing

LEVEL  
4  
Full Support

# make a SPLASH

This season's wear-anywhere style, with light-as-a-feather softness & exceptional comfort.

RUBYRIBBON.COM

@rubyribbonhq

## Second Skin Scoop Demiette®

1807 32-44 \$59

Festive Fuchsia

(avail February)

*McCallah is a 34DD. She's wearing a size 36 demi.*



## Heritage Demiette®

1868 32-46 \$62

Vanilla Cake

(avail March)

*Bella is a 36C. She's wearing a size 36 demi.*

# bye-bye BRAS

It's time to ditch uncomfortable underpinning. These wire-free, figure-smoothing Camis and Demiettes® have got you covered.

LEVEL  
4  
Full Support

**Heritage Cami**  
1798 34-50 \$83  
Floral Bloom  
(avail March)  
**Bootcut Pant**  
1934 S-3XL \$89  
Black (avail February)

*Bella is a 36C and 44" hip. She's wearing a size 36 cami and size L pant.*



LEVEL  
4  
Full Support

**Heritage Demiette®**  
1799 32-46 \$62  
Floral Bloom  
(avail March)  
**Lace Boy Short**  
3065 S-3XL \$54  
Black, Pale  
(avail February)

*McCallah is a 34DD and 44" hip. She's wearing a size 36 demi and size L short.*

RUBYRIBBON.COM  
@rubyribbonhq

LEVEL  
5  
Ultimate Support

**Ultimate Demiette® (L)**  
3063 32-50 \$75  
Petunia  
(avail February)  
**Sculpting Brief**  
1838 S-3XL \$59  
Pale (avail now)

*McCallah is a 34DD and 44" hip. She's wearing a size 36 demi and size L brief.*

**Ultimate Cami (R)**  
3056 34-50 \$92  
Petunia  
(avail February)  
**Sculpting Brief**  
1838 S-3XL \$59  
Pale (avail now)

*Bella is a 36C and 44" hip. She's wearing a size 36 cami and size L brief.*

**New! Dew Drops**  
1827 one-size \$18  
Champagne  
(avail January)



pretty &  
**POWERFUL**

Maximum support, sculpting and control. The ultimate compression and all-day comfort.

# we are stronger TOGETHER

Mix and match your everyday favorites. So comfortable you won't know you're wearing them.

"Second skin is so comfortable and perfect for lounging in."  
LIVVY

BETTER THAN YOUR BRA. LIFT, SUPPORT & SEPARATE

**LEVEL 2**  
Smoothing

**Second Skin Lace Cami (L)**  
1749 28-44 \$72  
Evening Blue (avail March)

**Second Skin Panty**  
1462 XS-3XL \$24  
Evening Blue (avail March)

Livvy is a 38C and 45" hip. She's wearing a size 36 cami and size L panty.

**LEVEL 4**  
Full Support

**Heritage Sheer Cami (R)**  
1806 34-46 \$88  
Delphinium Blue (avail March)

**Slim Leg Ponte Pant**  
1916 S-3XL \$89  
Black (avail March)

Bella is a 36C and 44" hip. She's wearing a size 36 cami and size L panty.

**LEVEL 2**  
Smoothing

**Second Skin Lace Demiette® (L)**  
1776 28-44 \$62  
Evening Blue (avail March)

**Second Skin Panty**  
1462 XS-3XL \$24  
Evening Blue (avail March)

McCallah is a 34DD and 44" hip. She's wearing a size 36 demi and size L panty.

**LEVEL 4**  
Full Support

**Heritage Sheer Demiette® (R)**  
1787 32-44 \$72  
Delphinium Blue (avail March)

**Second Skin Brief**  
1788 XS-3XL \$24  
Shell (avail now)

Jamie is a 38C and 47" hip. She's wearing a size 36 demi and size L brief.



# it's all in the DETAILS

Scalloped edging, soft satin and delicate lace make these the season's must-haves.

**Posh Demiette® (L)**  
1876 32-44 \$62  
Black/Rose Gold  
(avail February)  
**Posh Brief**  
1898 XS-3XL \$29  
Black/Rose Gold  
(avail February)

*Bella is a 36C and 44" hip.  
She's wearing a size 36  
demi and size L brief.*

**Posh Cami (R)**  
1875 32-44 \$72  
Black/Rose Gold  
(avail February)  
**Posh Brief**  
1898 XS-3XL \$29  
Black/Rose Gold  
(avail February)

*McCallah is a 34DD and 44"  
hip. She's wearing a size 36  
demi and size L brief.*

RUBYRIBBON.COM  
@rubyribbonhq

"I love the support this gives me and the pretty lace detailing!" LIVVY

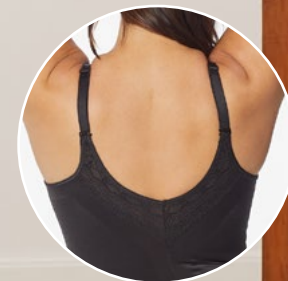
LEVEL  
4  
Full Support

**Pin-Up Cami (L)**  
3055 32-50 \$93  
Black (avail February)  
Cabernet (avail now)  
**Cargo Leggings**  
1933 S-3XL \$89  
Butterscotch  
(avail February)

*Livvy is a 38C and 45"  
hip. She's wearing a  
size 38 cami and  
size L leggings.*

**Pin-Up Demiette®**  
3051 32-44 \$72  
Black (avail February)  
Cabernet (avail now)  
**Sport Mesh Crop Leggings**  
1754 S-3XL \$69  
Black (avail January)

*McCallah is a 34DD  
and 44" hip. She's  
wearing a size 36  
demi and size L leggings.*



## pin-up READY

Turn up the glamour in our all-time fan favorite. Smooth, support and separate in curve-hugging style.



# On the MOVE

Upgrade to figure-sculpting activewear that keeps you in shape no matter what.

RUBYRIBBON.COM  
@rubyribbonhq

LEVEL  
**3**  
Light Support

**Square Neck Sport Tank (L)**  
1748 34-50 \$89  
Olive/Black (avail January)  
**Sport Mesh Crop Leggings**  
1754 S-3XL \$69  
Black (avail January)

*Bella is a 36C and 44" hip. She's wearing a size 36 sport tank and size L leggings.*

**Zip-Front Sport Tank (R)**  
1786 34-50 \$89  
Black/Lilac (avail March)  
**Sport Crop Leggings**  
1935 S-3XL \$89  
Black/Lilac (avail March)

*Jamie is a 38C and 47" hip. She's wearing a size 38 cami and size L leggings.*



# Q & A

WITH RUBY RIBBON STYLIST  
*Jamie Bazar*




"True personal growth occurs outside our own comfort zone."  
**JAMIE**

**BEST THING ABOUT BEING A RR STYLIST?**

I have no doubt that we're changing women's lives for the better.

things, and people. We must prioritize self-care at the top of the list, otherwise we can't possibly keep all the balls in the air.

**ADVICE TO OTHER PEOPLE THINKING ABOUT BEING A RR STYLIST?**

Why not try it? Even if you only have time to style 1-3 women a month you'll have changed that many lives throughout the year.

**MOST IMPORTANT LESSON THAT HAVING YOUR OWN RR STYLING BUSINESS HAS TAUGHT YOU?**

True personal growth occurs outside our own comfort zone.

**TOP BUSINESS/LIFE ADVICE FOR OTHER WOMEN?**

As women we juggle many balls and wear many hats because we take care of a lot of

**FAVORITE ITEM FROM RR AND WHY?**

The Second Skin Cami. I call it the "next to naked" collection because I can barely feel I have it on. It's very feminine and I feel great wearing it.

**BECOMING A RUBY RIBBON STYLIST**

**Shape your work - shape your life.** Join our community of female entrepreneurs and get started as a Ruby Ribbon Stylist today. We support you with all the training and resources you need to succeed. Go to RubyRibbon.com to learn more.

**Sport Demiette®**

1082 32-50 \$79

Black (avail now)

**Sport Ankle Leggings**

1828 S-3XL \$89

Olive/Black (avail January)

*McCallah is a 34DD and 44" hip. She's wearing a size 36 demi and size L leggings.*

# high IMPACT

Hit your personal best in style with enhanced comfort and support.

RUBYRIBBON.COM

@rubyribbonhq