

tori belle® cosmetics

PRODUCT CATALOG

FALL 2021



Tori Belle® Affiliate:

Contact:

toribellecosmetics.com | wholesale@toribellecosmetics.com



SCAN ME

Magnetude[®]

MAGNETIC EYELASHES

Our Magnetude[®] Magnetic Eyelashes are the original and best magnetic eyelashes on the market with the strongest and lightest magnets available. All of our lashes are nickel-free and vegan using cruelty-free faux-mink nylon fibers.



Core 10 Magnet



Classic



Illusion

Boardroom 

Our soft and demure Boardroom lash is a natural, doe eye lash designed to complete your most professional look.

- 7mm - 12mm
- Shade: Black
- Shape: Doe Eye

Coffee House 

A gorgeous java brown and black mix, Coffee House is the ideal lash to amp up your look every day.

- 9mm - 15mm
- Shade: Black & Brown Mix
- Shape: Cat Eye

Mynk 

The luxury of mink without the guilt, these synthetic, voluminous lashes will bring your already gorgeous eyes to life. Our largest core lashes yet!


- 6mm - 17mm
- Shade: Black
- Shape: Cat Eye

AVAILABLE IN NEW 10 MAGNET OR CLASSIC 6 MAGNET

9 to 5 

Our 9 to 5 lash is ultra-classy and luxurious, this is the perfect everyday lash. Who says you can't have it all? Classy enough for work and elegant enough for a cocktail hour afterwards!

- 5mm - 10mm
- Shade: Black
- Shape: Doe Eye

Wonderlash 

Evenly dispersed fine lashes. Medium volume, naturally curved lashes with a cat-eye flair. Feathery and ultra-realistic. Faux mink downy tips give this lash a soft look and feel.

- 4mm - 12mm
- Shade: Black
- Shape: Cat Eye

Date Night 

Ultra classy and luxurious. Perfect for a romantic dinner or sunset walk on the beach with that special someone.

- 6mm - 13mm
- Shade: Black
- Shape: Doe Eye

Ladies Night 

Get ready for a night out with the girls! You're sure to turn heads with our fabulous Ladies Night lashes!

- 5mm - 11mm
- Shade: Black
- Shape: Cat Eye

Selfie 

Always be photo-ready! Make a statement with our beautiful and bold "Selfie" lash!

- 7mm - 14mm
- Shade: Black
- Shape: Cat Eye

MAGNETUDE® ILLUSION MAGNETIC EYELASHES

Tori Belle's legendary soft faux mink Illusion lashes are fanned to perfection, lightweight on the new stronger 10 magnet band, and made to pair with Tori Belle® Magnetude® Magnetic Mascara. Illusion lashes give the natural and voluminous look of extensions, without the hassle, drawbacks or cost.

Epic

- 9mm - 12mm
- Shade: Black
- Shape: Doe Eye



Fantasy

- 5mm - 14mm
- Shade: Black
- Shape: Cat Eye



Mystic

- 4mm - 11mm
- Shade: Black
- Shape: Doe Eye



Magnetude®

MAGNETIC EYELINER AND MASCARA

Our Magnetude® Magnetic Eyeliner is water resistant, smudge-proof, latex-free, and magnetic! It glides on smooth and stays on. Our eyeliner doesn't move unless you take it off! There's no running, fading or flaking.

Classic Magnetude® Magnetic Eyeliner

SHADES: Black ● Brown ● Gray ●



Magnetude® Gold Magnetic Eyeliner

SHADE: Black ●



Magnetic Magnetude® Mascara

The first of its kind! From the original creators of magnetic eyeliner, we now present Magnetude® Magnetic Mascara, a dual-headed applicator to coat your natural lashes with a magnetic surface to hold your Illusion lashes on all day long.

SHADE: Black ●



MAGNETIC LASHES AND ACCESSORIES



Spirit Stackers



Our Spirit Stackers, with 10 shockingly strong magnets, are designed to pair with any of our Tori Belle® Magnetude® products to add a pop of color or fun. This is your new best friend for any special occasion, guaranteed to show your spirit.

SHADES: Red, Royal Blue, Purple, Gold, Silver

Crystal Lash Bling

Crystal Lash Bling is the perfect accessory when you are extra! Twenty magnetic crystals and two crystal-encrusted strips made to pair with Magnetude® Magnetic Lashes.



Spirit Bling



Shine your brightest with our Spirit Bling. Designed to be stacked with any of our Tori Belle® Magnetude® products. These rhinestone details add a touch of color to show your spirit!

SHADES: Red, Orange, Yellow, Green, Royal Blue, Navy Blue, Purple, Silver, Gold, Crystal AB



Siren Mascara

This cutting edge one-step fiber mascara truly delivers a 4D effect by both volumizing and lengthening lashes. Nylon fibers bind to natural lashes to dramatically lengthen while this ultra-black mascara coats and thickens lashes. Amazing smudge-proof formula won't come off until you take it off but removes easily and won't block pores. Never flakes or runs! Exceptionally long-wearing and stands up to high humidity, perspiration, and rain.

SHADE: Black ●

Lash Adhesive Eyeliner

Our easy application adhesive eyeliner pen for our non-magnetic strip lashes. As always, Tori Belle® gives you the highest quality lashes, more control than glue, and no mess. Just draw on the liner and apply lashes for a strong, all-day hold.

SHADES:

Black ● Brown ● Clear ○



TORI BELLE® NON-MAGNETIC ADHESIVE LASHES

Bold

Lashes that deserve your full attention, our BOLD lashes are long and full bodied with high-quality faux mink fibers that you've come to expect from Tori Belle®.



Subtle

A classy and versatile lash perfect for all occasions, day or night. The high-quality faux mink fibers create a gorgeous doe-eyed shape to complement every look you create.



XOXO

Gorgeous and glamorous, our XOXO lashes are full and flirty for an ultra-wearable glam look. The high-quality faux mink fibers make a lovely cat-eye shape that make you want to keep batting your fabulous lashes all day.



ELEMENT

Our Element Line combines beauty and functionality, using the finest ingredients for a naturally polished and long-lasting look.

Element Liquid Foundation

Element Liquid Foundation is a water-based formula enriched with skin moisturizing and nourishing ingredients to provide medium, buildable coverage. Made with a selected blend of world-class ingredients to obtain optimal coverage and comfort.

SHADES:

110, 120, 130, 140, 150, 160, 170, 180



Element Liquid Concealer

Thanks to its scientifically balanced spherical powders that illuminate and conceal, our Element Liquid Concealer is formulated to be matte and long-lasting. It also contains natural origin moisturizers that ensure 24-hour hydration, vitamin E, and antioxidant actions for a smooth and even complexion.

SHADES:

110, 120, 130, 140, 150, 160, 170, 180



ELEMENT

Our Element Foundation combines all of the elements to create a flawless finish for your skin. It's light as air while minerals and vitamin-E provide moisturizing full matte coverage.

Element can be used both wet and dry as a liquid foundation, powder, or powder foundation with minimum fallout. Our infinite color combinations make it easy to create your perfect skin tone.

Element Pressed Powder Foundation

With this light and airy (but full coverage) compact powder foundation formulated with vitamin E, your skin will look young and fresh at all times. It can be used dry for a soft look or wet for a more silky look. Store it in our Magnetude® Palette.

SHADES:

110, 120, 130, 140, 150, 160, 170, 180



Element Blush

Give your cheeks the healthy look they deserve. Our Element Blush is key to finishing any makeup routine. It's ideal for anyone looking for a fresh cheeky glow. Get it with the 2x2 Magnetude® Magnetic Palette.

SHADES:

- Coral
- Himalayan Salt
- Rose Quartz



THE WORKS

The Works is perfect for brows, upper and lower lids, waterline, and tight line.



Brow and Liner Kit

This purse-ready kit combines our ingenious all-in-one eye and brow gel (The Works), three super flexible brow stencils, and a professional two-sided brush.

SHADES:

- Black
- Brown
- Dark Brown
- Taupe

Brow Gel and Liner

The Works is a velvety-smooth gel for buildable application that is TOTALLY waterproof and smudge-proof when dry. This all-in-one product is perfect for brows, upper and lower lids, waterline, and tight line.

SHADES:

- Black
- Brown
- Dark Brown
- Taupe



Stark Naked Eyeshadow Palette

Our new, collectible, modular Stark Naked Eyeshadow Palette is a makeup MUST have! It offers you ultra-versatile silky mattes and shimmering metallics, perfect for contouring and highlighting.

SHADES: Nubian, Alabaster, Blush, Bronzed, Rosy Glow, Ivory Glow



Space Out Multi-Use Palette

An out-of-this-world combination of six rich cosmically-inspired shimmering eyeshadows for every skin type. Velvety-textured and highly-pigmented shimmer eyeshadows, our Magnetude® Modular Palettes will be your favorite travel companion.

SHADES: Milky Way, Venus, Cosmos, Mars, Deep Space, Space Dust



Flat Earth Multi-Use Palette

Six stunning earth tone matte eyeshadows for every skin type. Velvety-textured and highly-pigmented eyeshadows, our ultra-versatile Magnetude® Modular Palettes will be your favorite travel companion.

SHADES: Porcelain, Sandstone, Wine, Terracotta, Coal, Chestnut



Timeless Warm Pressed Pigment Palette

Timeless Warm Pressed Pigment Palette has four multi-use shades that support a wide array of skin tone types. Use to complement warm skin tones or add warmth to cooler tones.

SHADES: Tiramisu, Brandy, Brulee, Macaron



Timeless Cool Pressed Pigment Palette

Timeless Cool Pressed Pigment Palette is expertly crafted to complement cooler skin tones. Complete with four multi-use shades for highlight, contour, or eyeshadow to complement the coolness in your hair, eyes, and skin.

SHADES: Decadent, Opal, Sable, Cacao

24K Multi-Use Palette

With real flecks of 24K gold and rich pigmented colors, this super versatile and luxurious palette will make you look and feel like a million bucks. They also store easily in either the Magnetude® Modular Clutch Palette or in our new Magnetude® 2X2 Magnetic Palette for a million-dollar look on the go.

SHADES: 24K Gold, Hills Gold, Black Gold, White Gold, Rose Gold



Velvet Kisses® Long Lasting Liquid Lip



Highly-pigmented, full-coverage, matte liquid lip. Velvet Kisses® keeps your lips moisturized and soft all day with vitamin E.

SHADES: Tori Belle Red, Bare, Glow, Seashell

IGNITE PLUMPING LIP GLOSS



Enjoy richer, fuller-looking lips instantly with our unique Ignite plumping formula. This sizzling lip gloss delivers a unique tingling sensation thanks to our plumping serum. Nourishing ingredients help visibly smooth and firm lips while providing long-lasting hydration.

Take it to the next level with our newly formulated 24K Lip Gloss. Add a touch of glimmer with real flecks of gold for that million-dollar look you deserve.

SHADES: Blush, Cinnamon, Tori Belle Red, 24K

ENOLOGY

LIP STAIN & LIP LINER STAIN



Enology Lip Stain

The Enology line is a weightless, moisturizing, long-lasting, mask-friendly lip stain. Enriched with grape seed extract that takes on a unique shade for each individual.

- SHADES:
- Pinot Noir
 - Bellini
 - Sherry
 - Pink Champagne
 - Malbec

Enology Lip Liner Stain

Inspired by the science of wine, the Enology line is enriched with grape seed extract that hydrates and soothes. Our Lip Liner Stain is moisturizing, weightless, long-lasting, and mask-friendly.

- SHADES:
- Malbec
 - Sherry
 - Pinot Noir



Lash Applicator

Specifically designed to make applying magnetic lashes quick and easy. Utilizing an innovative shape, these professional eyelash tweezers safely apply lashes in seconds with extreme precision – unlike using your fingers.



Magnetic Lash Anchors

Magnetude® Lash Anchors are multi-functional. Change your look, stack your lashes, use with or without liner!



Lash Scissors

Our durable and compact Lash Scissors are perfect for trimming false lashes with precision. Make lash application easy by custom-fitting your lashes to your desired length.

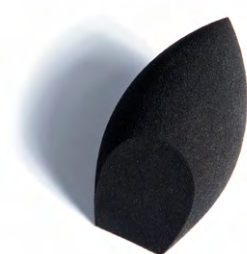


Shake It Off Makeup Remover

This formula easily and effectively removes waterproof and smudge-proof makeup. It is formulated to work with Magnetude® Eyeliner, leaving skin clean and refreshed without drying. Contains skin conditioning and antioxidant ingredients.

Complexion Perfection Beauty Sponge

For use wet or dry, our multi-angled Complexion Perfection Beauty Sponge is perfect for blending and applying any of our Element Liquid Foundation, Concealer, Pressed Powder, and Blush products.



Brushy Cleany Thingy

A quick and easy way to clean your makeup brushes. Our travel-ready cleaning sponge removes makeup to allow you to go from color to color without mixing or transferring shades and without drying time.



Clutch Accessory Bundle

We now have convenient add-ons for our Magnetude® Modular Clutch Palette. Perfect for holiday travel!

- Magnetude® Lash Discs (set of 4)
- Magnetude® Magnetic Sleeve
- Lash Applicator



Magnetude® 2X2 Magnetic Palette

Touch up on the go with our new Magnetude® 2x2 Magnetic Palette. This small, but mighty, compact is perfect for storing our Element Blush or four smaller modular eyeshadow pans.



Magnetude® 3X3 Magnetic Palette

Never be without your makeup essentials. Our Magnetude® 3x3 Magnetic Palette is perfect for storing our Element Foundation or up to 6 modular eyeshadow pans. Purse-approved and ready to use.



Magnetude® Modular Clutch Palette

Our magnetic clutch is the one-size-fits-all solution for your glam essentials. Keep all of your pressed powders, eyeshadows, and even lashes in one sleek, magnetic case.

tori belle.
BRUSH KIT



The perfect all-in-one brush kit! Wonderfully soft and expertly curated, these eight unique brushes are specifically designed to work with our highly-pigmented products for a seemingly airbrushed complexion. The immaculately detailed faux-leather storage container doubles as a convenient on-the-go container. All the brushes you need to complete your look!

tori belle[®]. cosmetics

NOTES

Tori Belle[®] Affiliate:

Contact:

